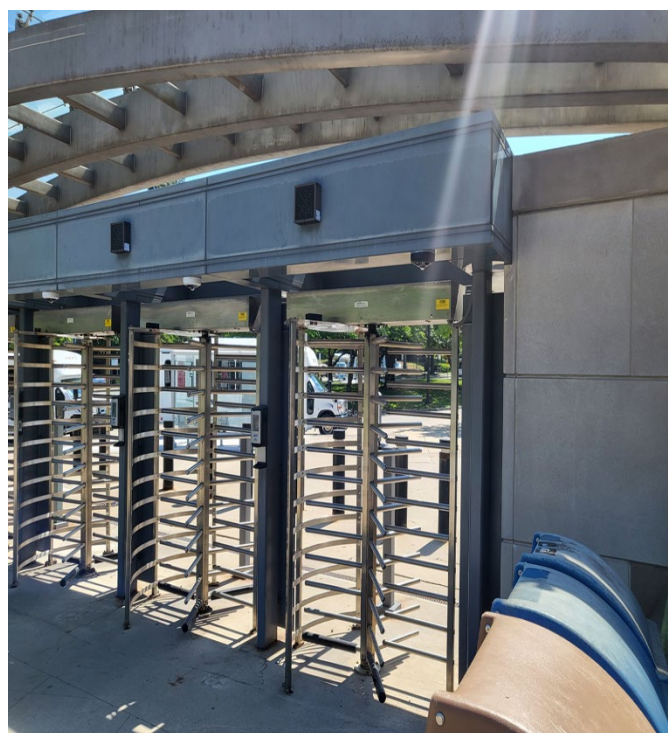


Once you are done with visitor screening and have received your visitor pass, you will come out of the NIH visitor center.



Turn right and you will see this shuttle/bus loop where you will pass the steel revolving employee entrance.



Follow this pedestrian path until you pass Building 3 on your right.



Building 3



The NIH Building 16: Lawton Chiles International House (Stone House) entrance will be on your left.



Follow the stairs leading to the [Stone House](#).

